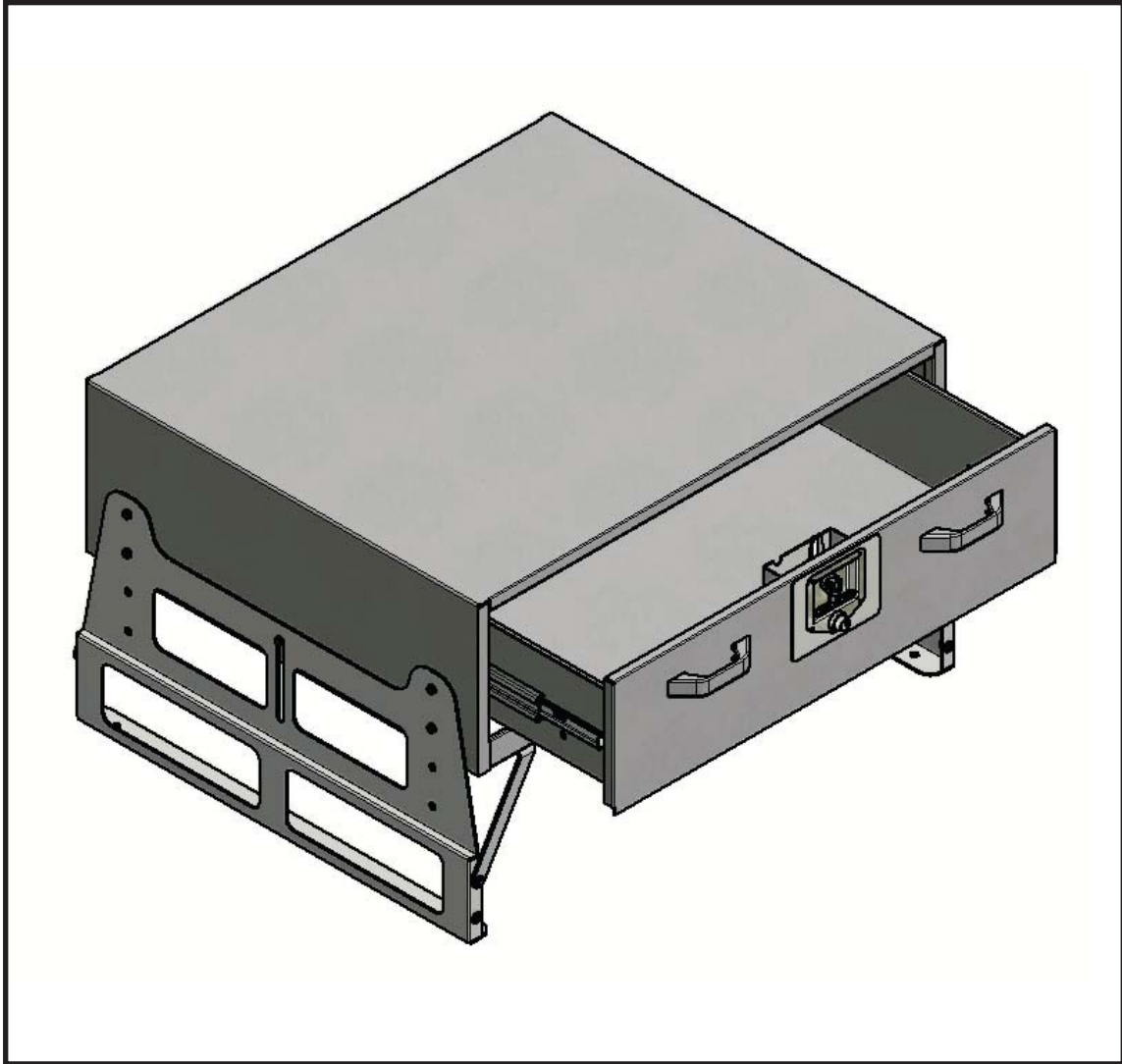


TUFLOC

INSTALLATION INSTRUCTIONS

TufBox Base



Warranty

Thank you for purchasing the TufBox manufactured by TUFLOC. We have worked hard to develop the best storage box on the market and warrant this product for one year from date of purchase against defects in materials and workmanship. This warranty is limited to replacement or repair of the product only. No other warranties are expressed or implied. Please contact the factory for warranty claims before returning any product.

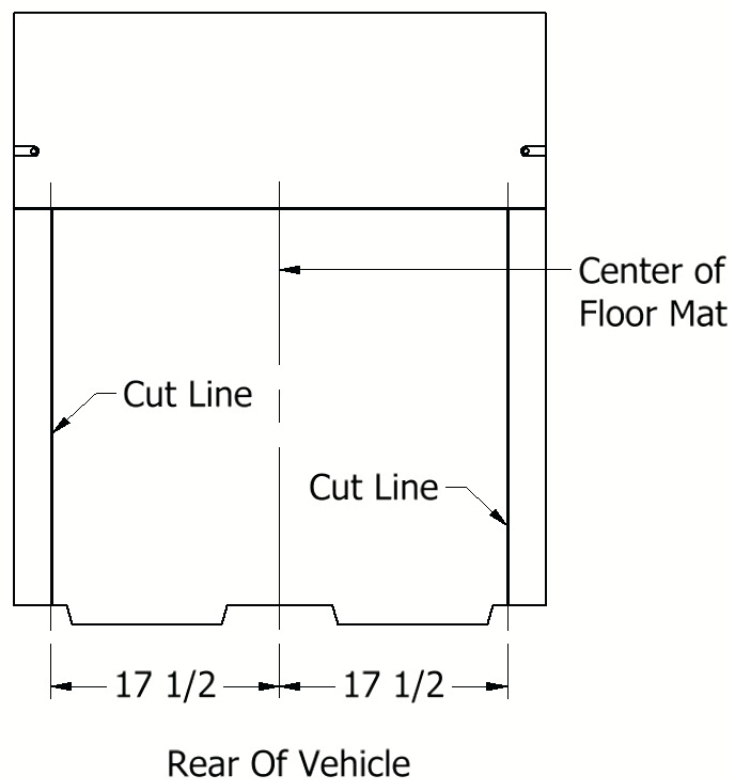
Prior to Installation

It may be necessary to remove contents that are stored in or around the mounting footprint of the TufBox as these components may not be accessible after it is installed.

When the TufBox is installed, the spare tire WILL NOT be accessible if it is kept under the cargo mat unless the TufBox Base is installed at Position 3.

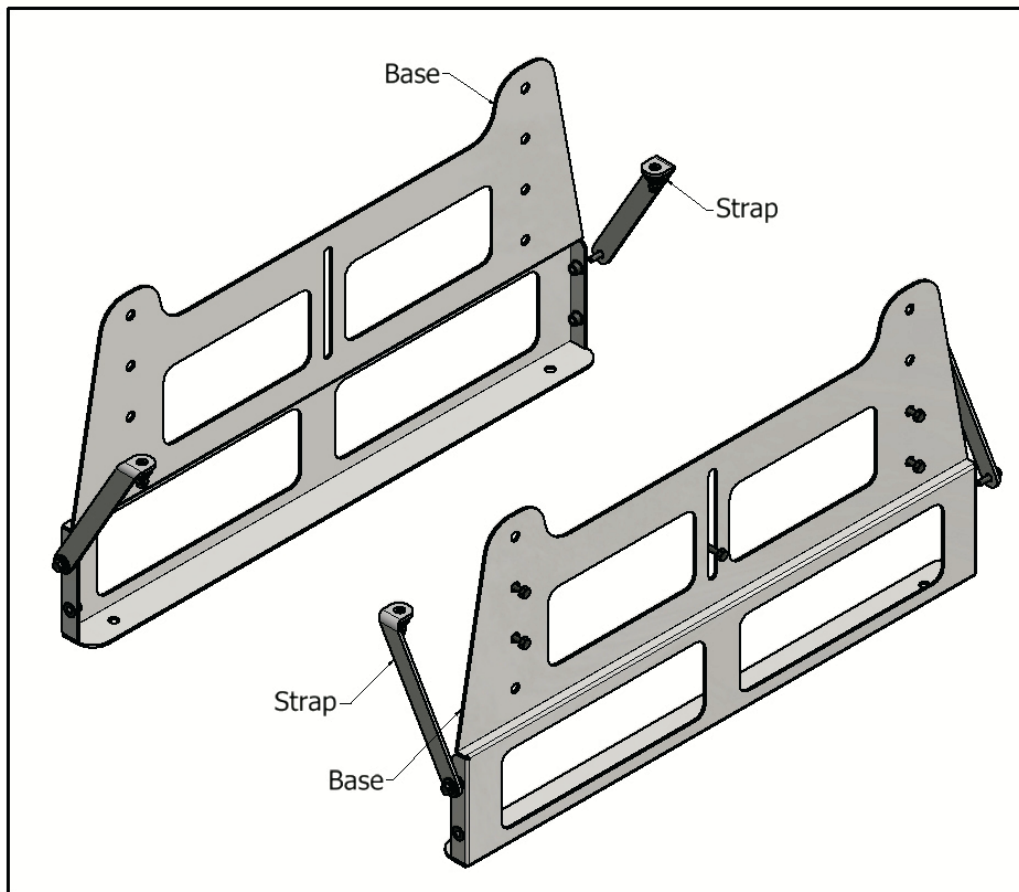
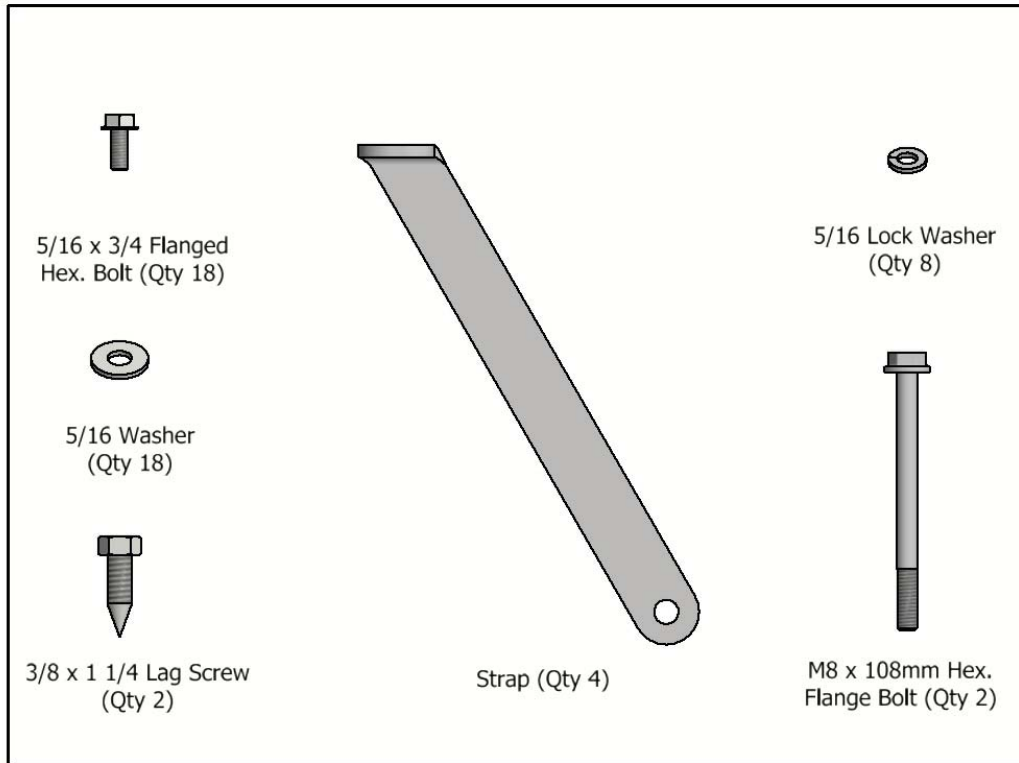
The spare tire must remain in its original location in the Ford Interceptor.

If the spare tire will need to be accessed, the cargo mat will need to be cut. To do this, remove the cargo mat and locate the center from left to right. Once centerline is determined, mark two lines on the right and left at 17-1/2" from the centerline. Cut the cargo mat at the marked locations and place each piece in its original location. (See diagram below)



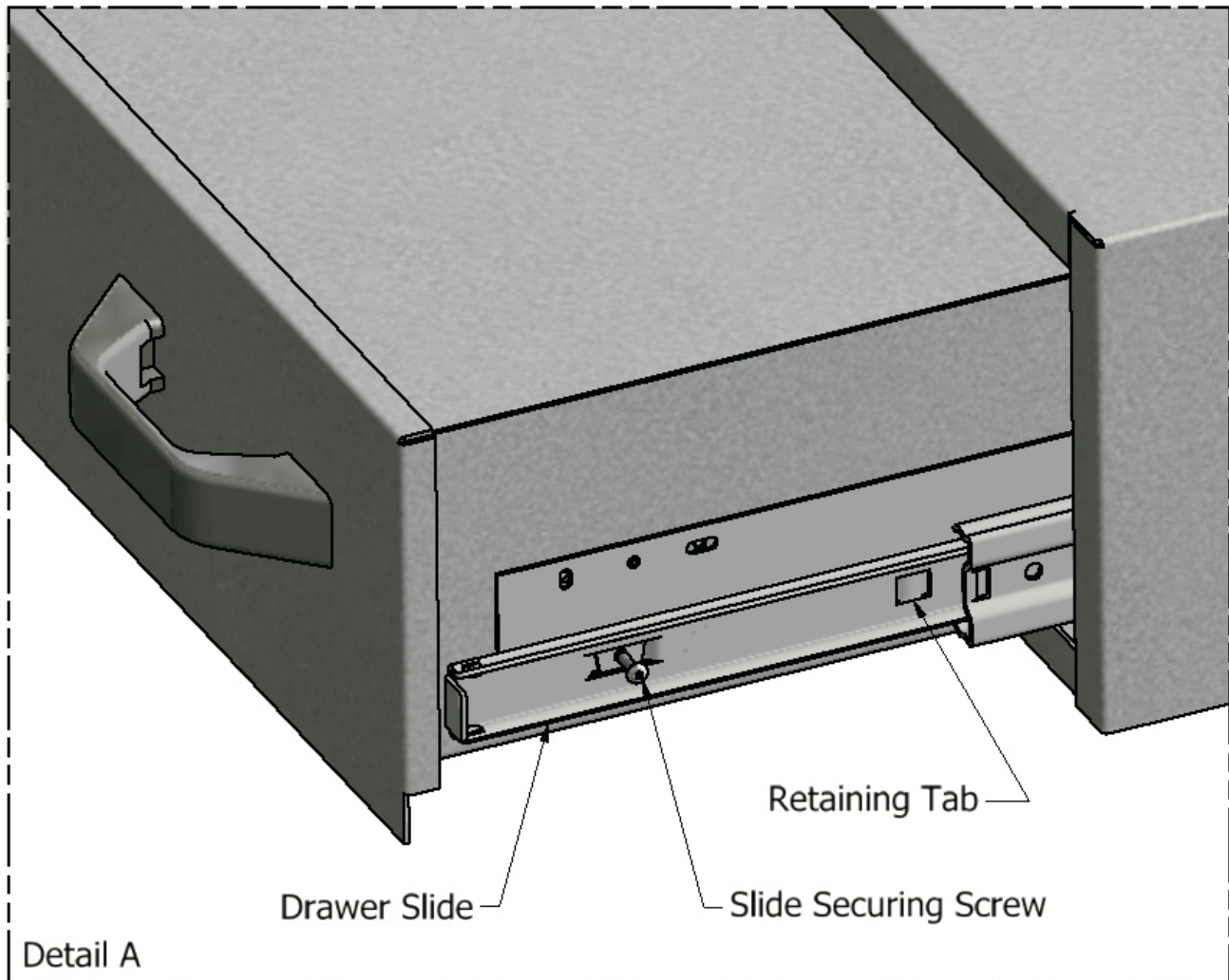
Base Kit Components

Hardware Supplied



Removal of Drawer

Remove the drawer from the cabinet by removing the Slide Securing Screws located on each side of the drawer. Next, while pressing in on the Retaining Tabs located on the sides of the drawer, lift up on the front of the drawer, removing it from the tabs and pull it away from the cabinet. (See detail below)

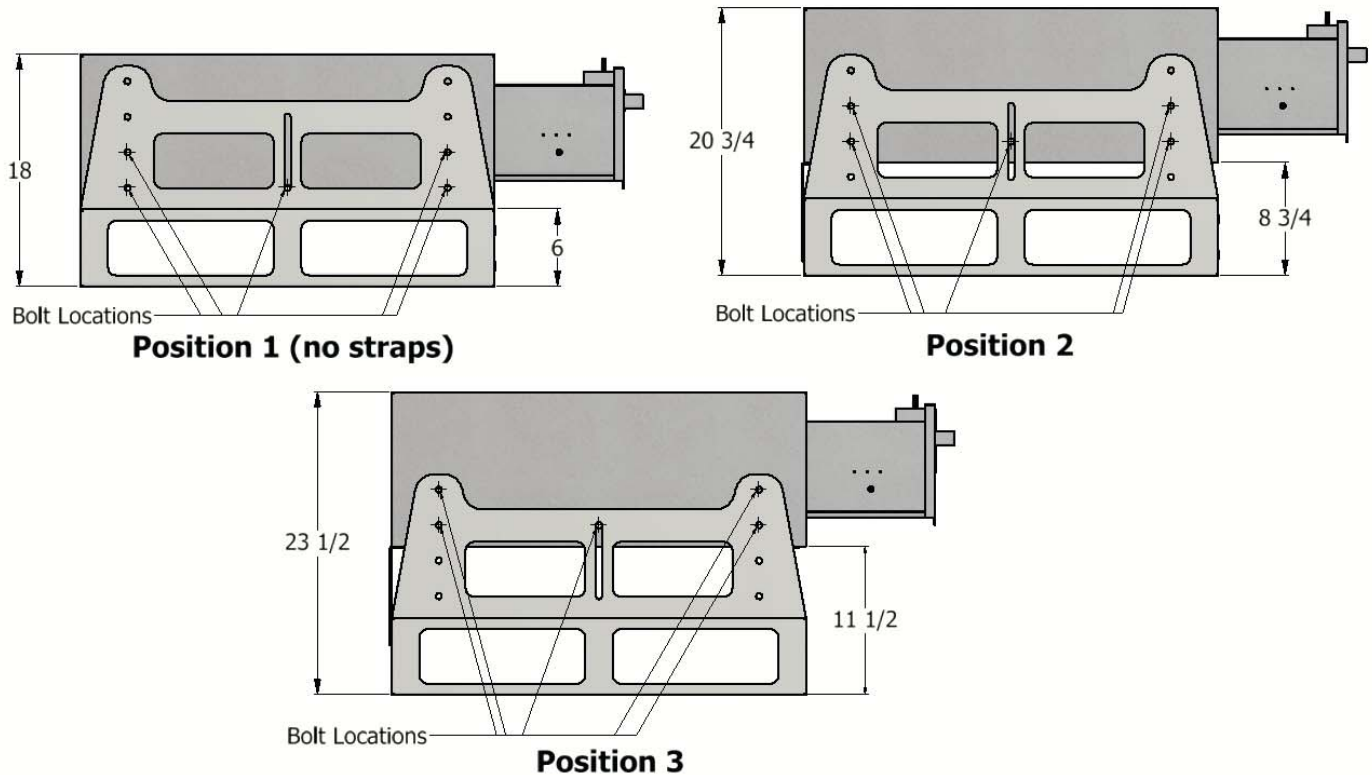


Secure the Base to the TufBox

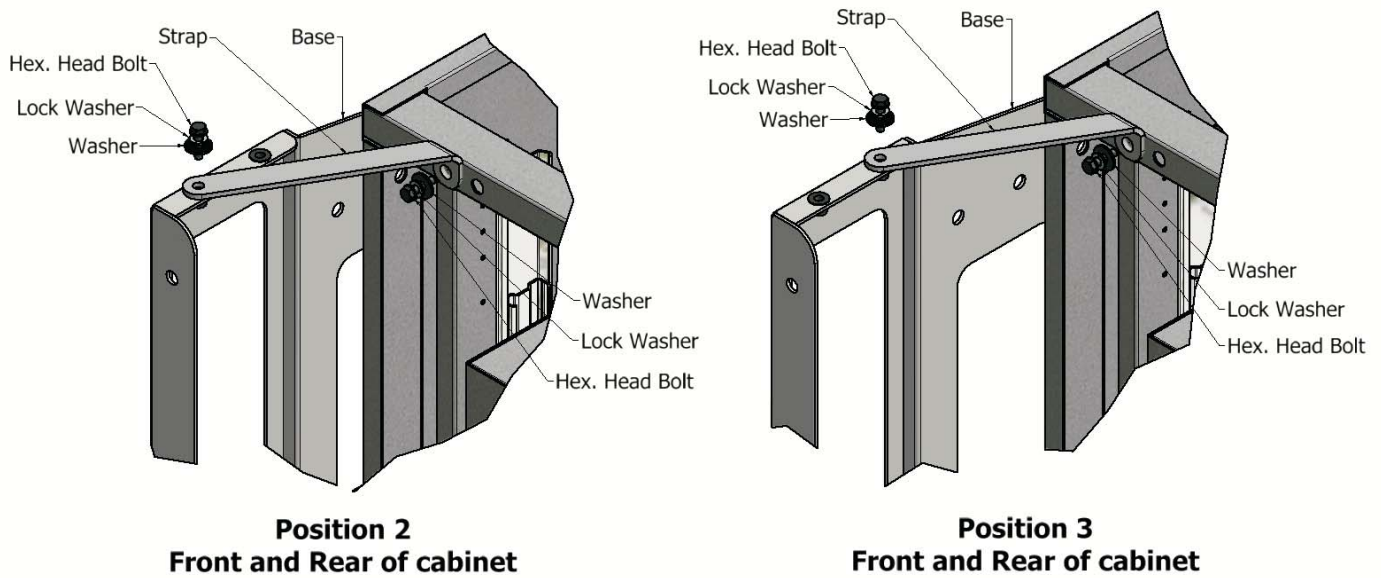
Place the TufBox inside the vehicle to make sure the rear door or hatch of the vehicle will close properly.

The Base allows the TufBox to be positioned at three different heights. At this point it will also be necessary to determine the desired height the Base raises the TufBox off the floor. Position #1 will raise the TufBox 6" off the floor, allowing the drawer of the TufBox to clear the trim of the vehicle. Position #2 will raise the TufBox 8-3/4" off the floor. Position #3 will raise the TufBox 11-1/2" off the floor, allowing access to the spare tire stored underneath.

Using five Hex Head Bolts, mount each side of the Base to the TufBox. (See Diagrams below for mounting in Positions 1, 2 or 3)



Fasten the Straps to the TufBox

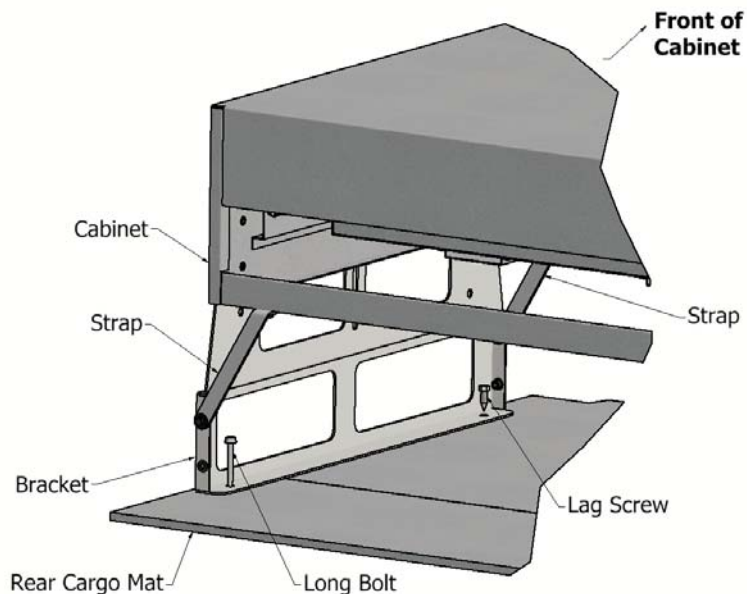


Skip this step when assembling the Base in Position 1 as Straps are not necessary.

Using the correct mounting holes, mount the Base in Position 2 or 3 using the supplied Straps and Fasteners. Install the four straps, two in front and two in back, as shown in the diagram above.

Mount Entire Unit into the Vehicle

Locate the bolts on the right and left side that hold down the rear cargo mat of the vehicle. Remove these two bolts and place the entire TufBox assembly into the rear compartment. Line up the pre-drilled holes in the TufBox Base with the two empty bolt-holes in the vehicle. Insert the two long bolts into the TufBox Base and tighten. Locate the two mounting holes in the front of the Base and use the supplied lag screws to secure the front of the Base to the cargo mat (See detail below).



Place Drawer into the Cabinet

Place the drawer back into the cabinet by extending the drawer slides and snapping the rails on the tabs. You may need an assistant to help align the tabs over the drawer slides. Re-install slide securing screws on each side of drawer.

Maintenance

These drawers are intended to hold a maximum weight of 200 lbs. Do not exceed the drawer weight limit. Exceeding the weight limit can make the drawer difficult to operate and can shorten the life of the bearings in the drawer slides.

The TufBox is designed to provide years of reliable service with minimal maintenance. Occasionally, coat the key with a light petroleum-based lubricant such as WD-40 and insert the key into the lock & turn a few times to lubricate the lock cylinder. Never use a graphite based oil. The drawer slides should also be lubricated periodically to assure longer life.

Standard T-Handle: An adjustable cam can be adjusted to keep the drawer tight and eliminate rattle (See diagrams below).

Combination Lock: Please refer to enclosed instruction booklet.

Various Locking Configurations

